

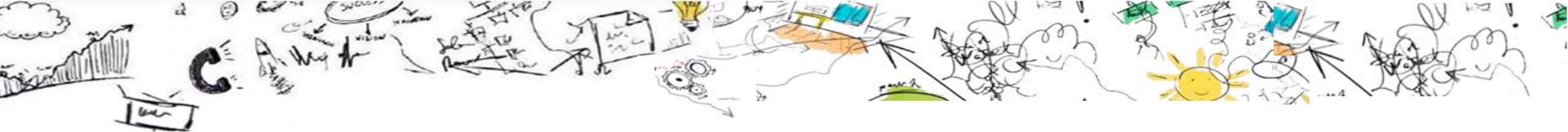


GEORG-AUGUST-UNIVERSITÄT  
GÖTTINGEN

# DMS-Workshop für Hochschulen

Eingangsrechnungsverarbeitung SAP  
Markus Sünker  
d.velop AG





# Agenda

Überblick

Eingangs-RG  
erfassen und  
klassifizieren

Eingangs-  
rechnungsprüfung  
SAP FI

Live  
Rechnungs-  
erfassung und  
Prüfung

Fragen

# Unternehmensvorstellung

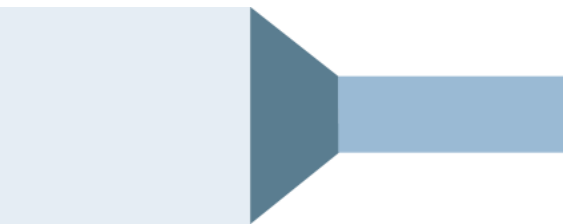
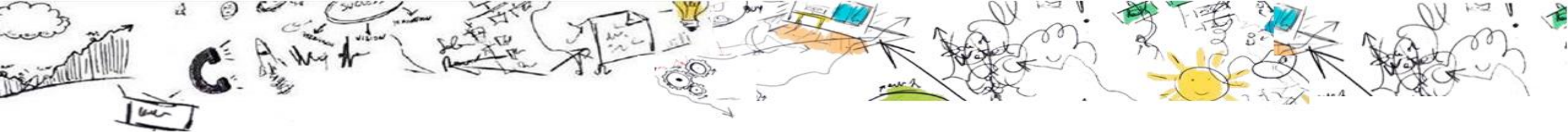


Einer der größten deutschen Hersteller  
von ECM-Lösungen

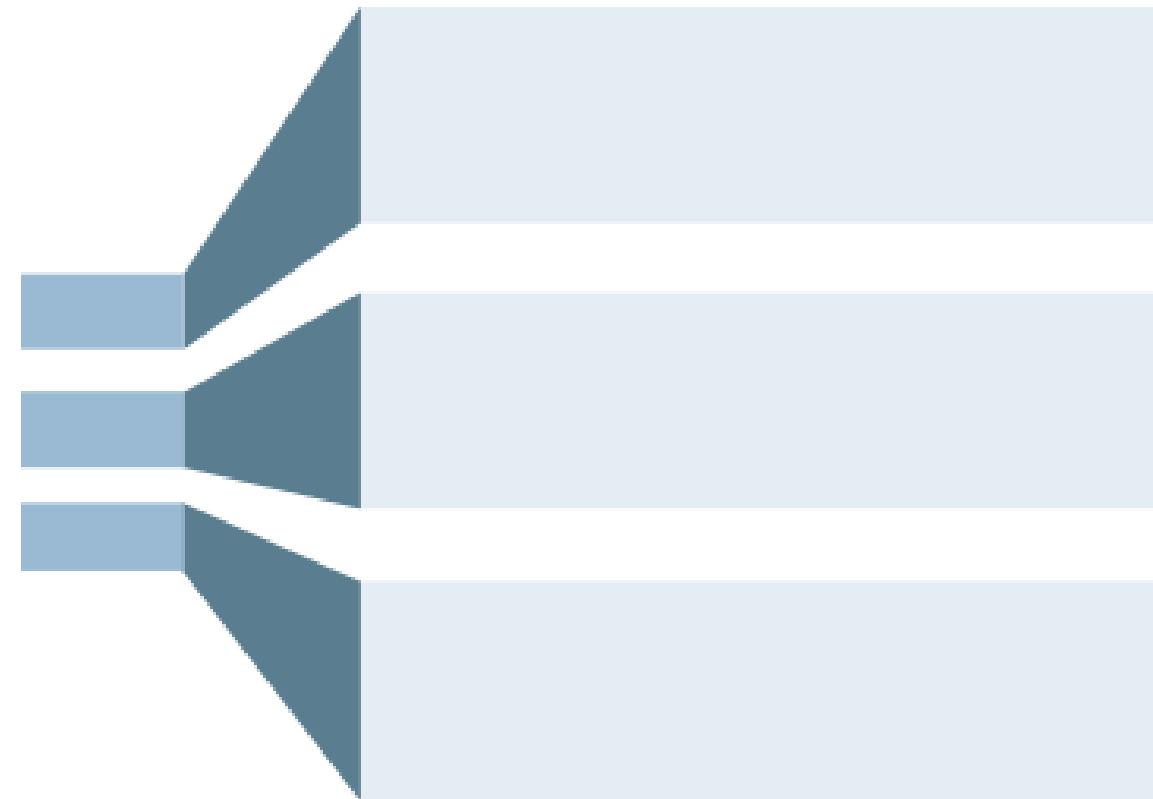
Revisionssichere Archivierung  
Dokumenten Management  
Workflow

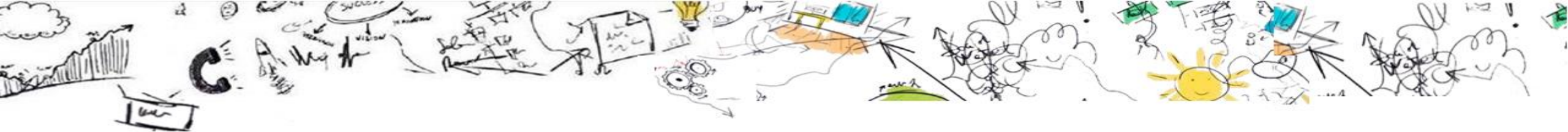
Hauptsitz im westfälischen Gescher 1992 gegründet  
Über 350 Mitarbeiter am Standort Gescher  
Über 44 Mio € Umsatz  
Über 170 Partner, teilweise weltweit agierend  
Über 6.600 Kunden

d.velop



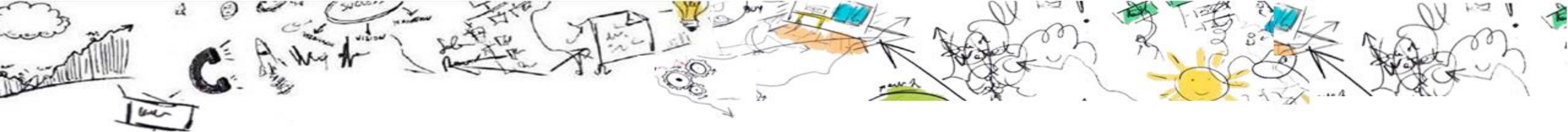
# Informations- architektur



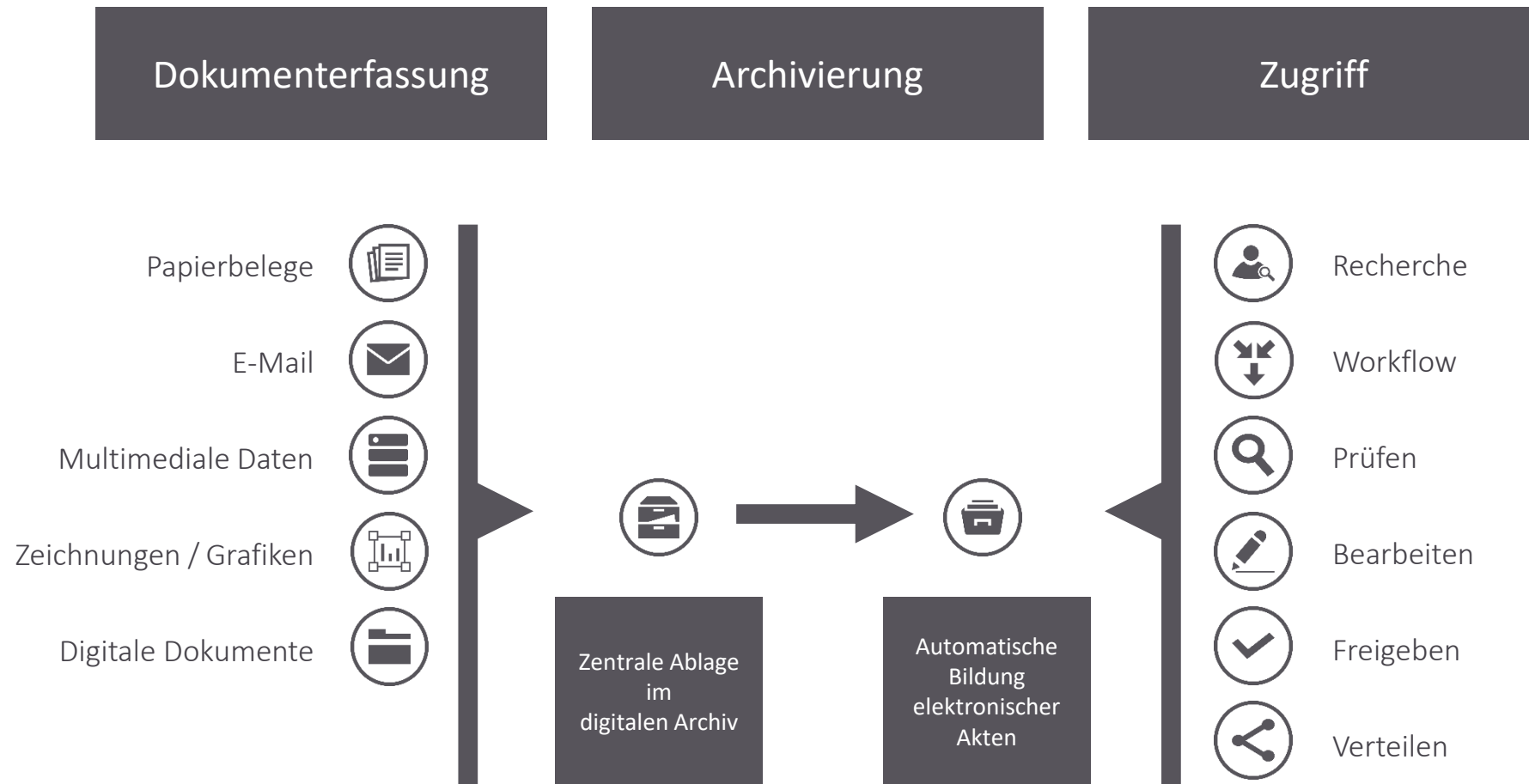


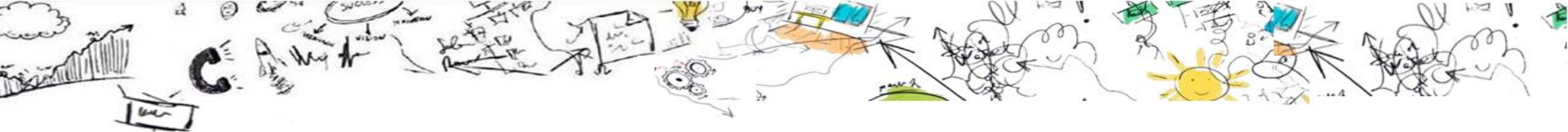
# Ausgangslage - Informationssilos














# Übersichtlich recherchieren, bearbeiten oder verteilen











# Unsere Lösungen auf einen Blick

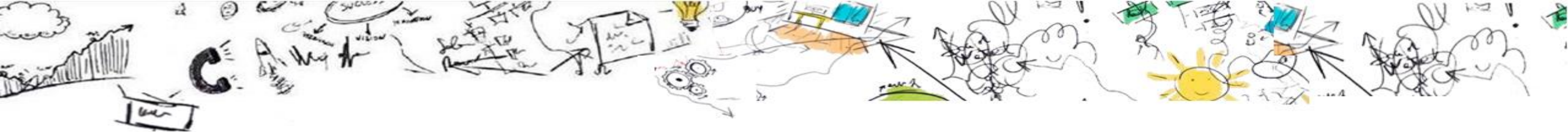
 Scannen und Klassifizieren	 Rechtskonforme Archivierung	 Eingangsrechnungsverarbeitung	 Vertragsmanagement
 Office Integration	 Workflow Management	 Mobiles ECM	 Personalmanagement
 E-Mail-Management	 ERP Integration	 Elektronische Signaturen	 Posteingangsverarbeitung

## PRO·S·APP

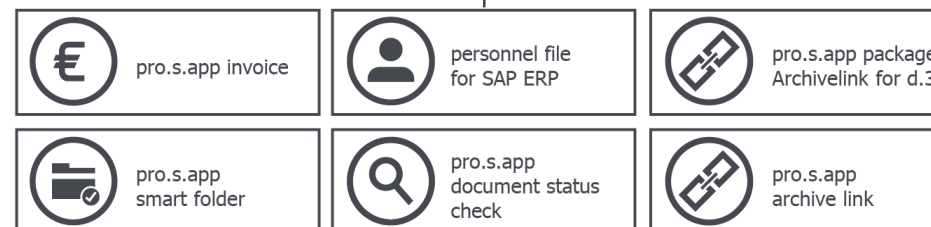


 pro.s.app invoice	 personnel file for SAP ERP	 pro.s.app package Archivelink for d.3
 pro.s.app smart folder	 pro.s.app document status check	 pro.s.app archive link

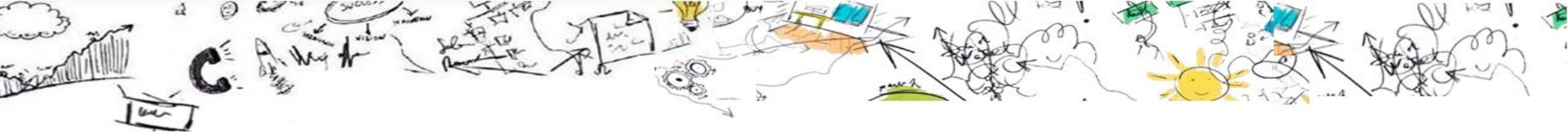




# SAP-Kompetenz der d.velop







# SAP-Kompetenz der d.velop

Das Thema SAP ist strategisch in der d.velop AG verankert und mit einem eigenen SAP Kompetenz-Center besetzt, in dem aktuell **18 Mitarbeiter** beschäftigt sind.

## Zertifizierter Partner

Als offizieller Partner der SAP AG sind unsere Lösungen von der **SAP AG zertifiziert**. Unsere Komponenten sind frei von Rechten Dritter. Bringen Sie Ordnung in Ihre Vorgänge, Ablagen und Prozesse, nutzen Sie die smarten und vor allen Dingen praxisorientierten Lösungen eines erfahrenen Profis im Dokumenten-„Handling“ in Verbindung mit SAP ERP.



„Team SAP“



**Certificate**  
SAP INTEGRATION CERTIFICATION



SAP SE hereby confirms that the Interface software **pro.s.app archivelink 3.0** for the product

**pro.s.app archivelink 3.0**

of the company **d.velop AG**

has been certified for integration with SAP NetWeaver via the SAP Integration scenario BC-AL with AL\_LOAD 6.20.

This certificate confirms the existence of product features in accordance with SAP certification procedures. It does not guarantee that the product is error-free.

The certification test is documented in report no. 28373416 and expires October 14, 2017.

Vendor Hardware: x86\_64  
Vendor Operating System: Windows 2012 R2 64 Bit  
SAP Test System: SAP ECC 6.0  
Tools used for the technical integration: Third-Party Content Server

This configuration meets the requirements for connecting **pro.s.app archivelink 3.0** to SAP NetWeaver.

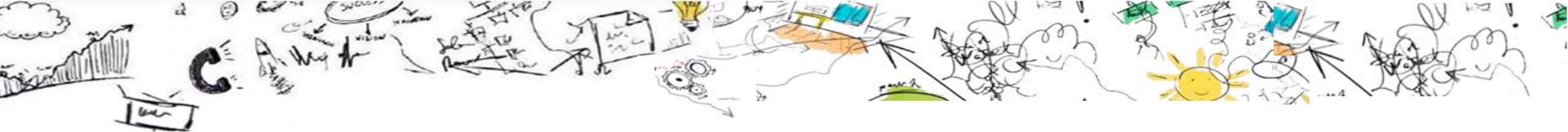
Certified Functions:  
HTTP Content Server Functionality  
OLE Frontend Functionality  
Barcode SAPI  
AL-LOAD Test performed with Key Figures  
Solution Manager Ready

Waldorf, October 15, 2014  
Dirk Michael Schütze, SAP SE

SAP, R/3, and SAP NetWeaver are registered trademarks of SAP SE. All other names are registered or unregistered trademarks of the individual firms. <http://www.sap.com>

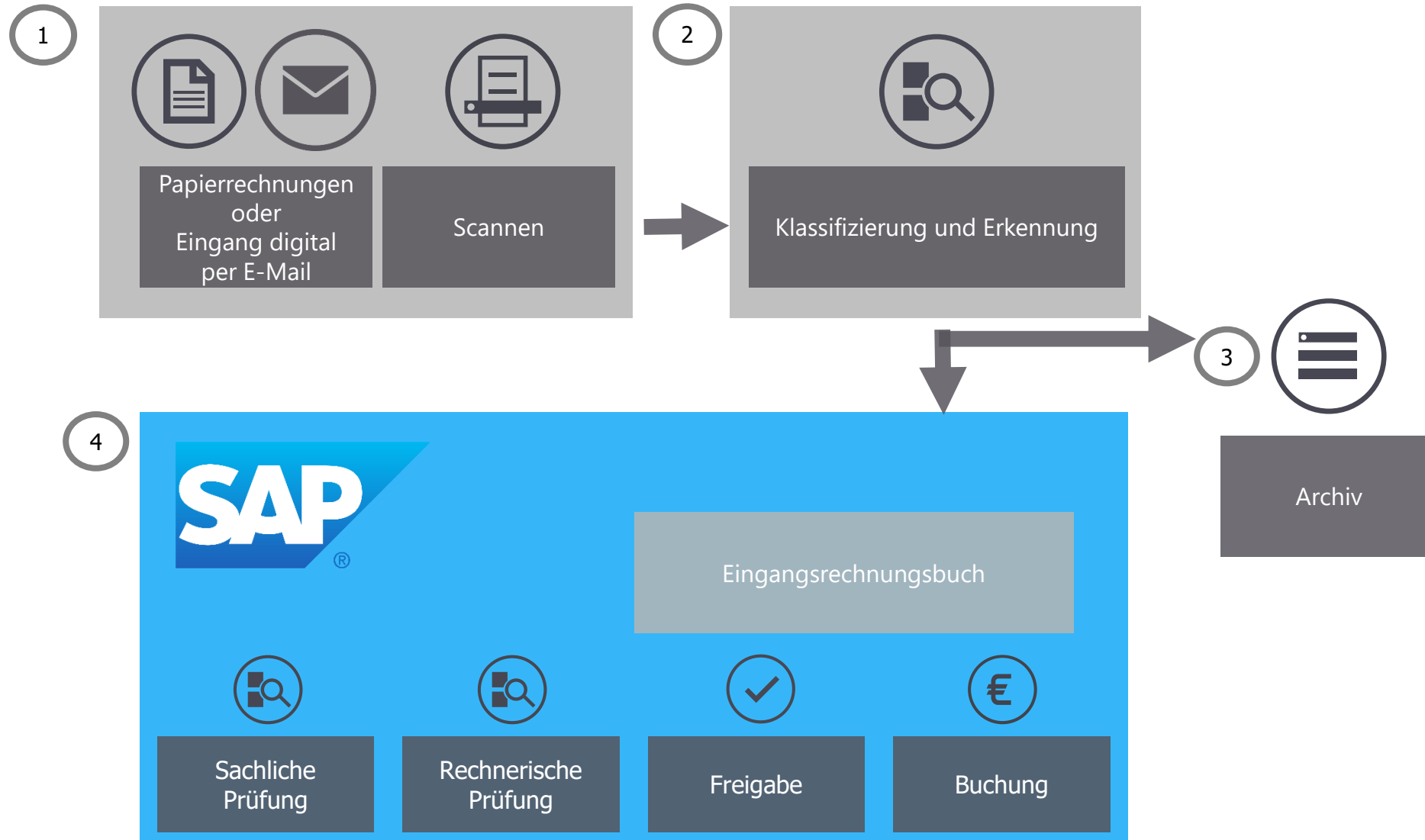


**SAP® Certified**  
Integration with SAP NetWeaver®

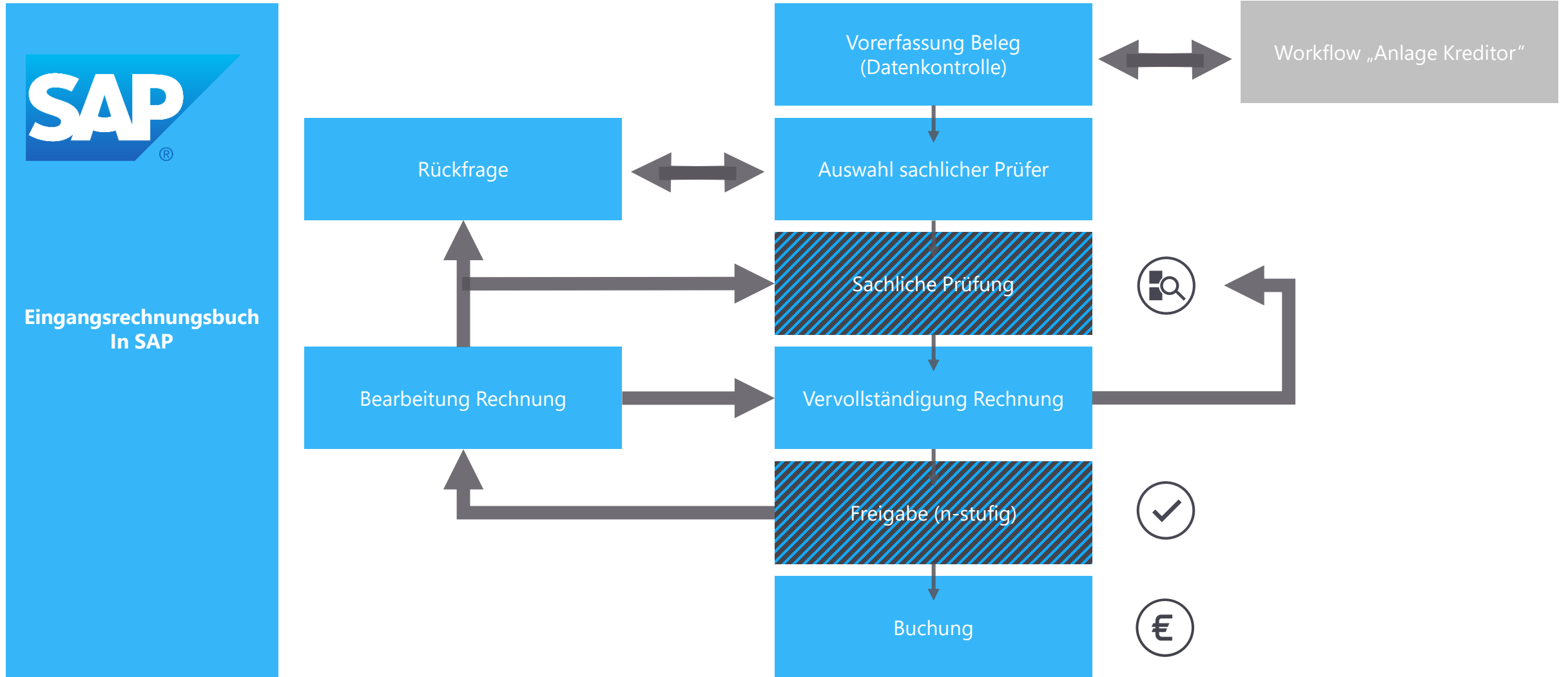


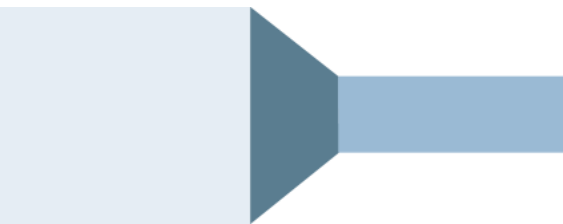
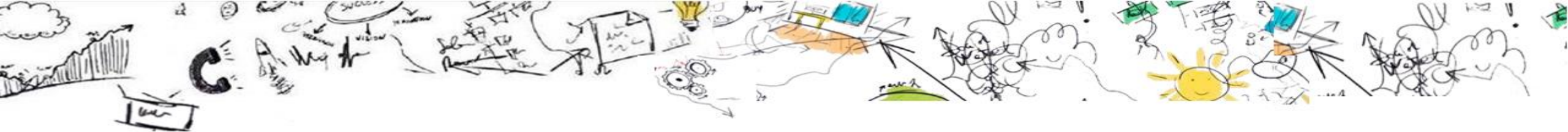
# ERV mit SAP ERP

# Gesamtprozess ERV mit SAP

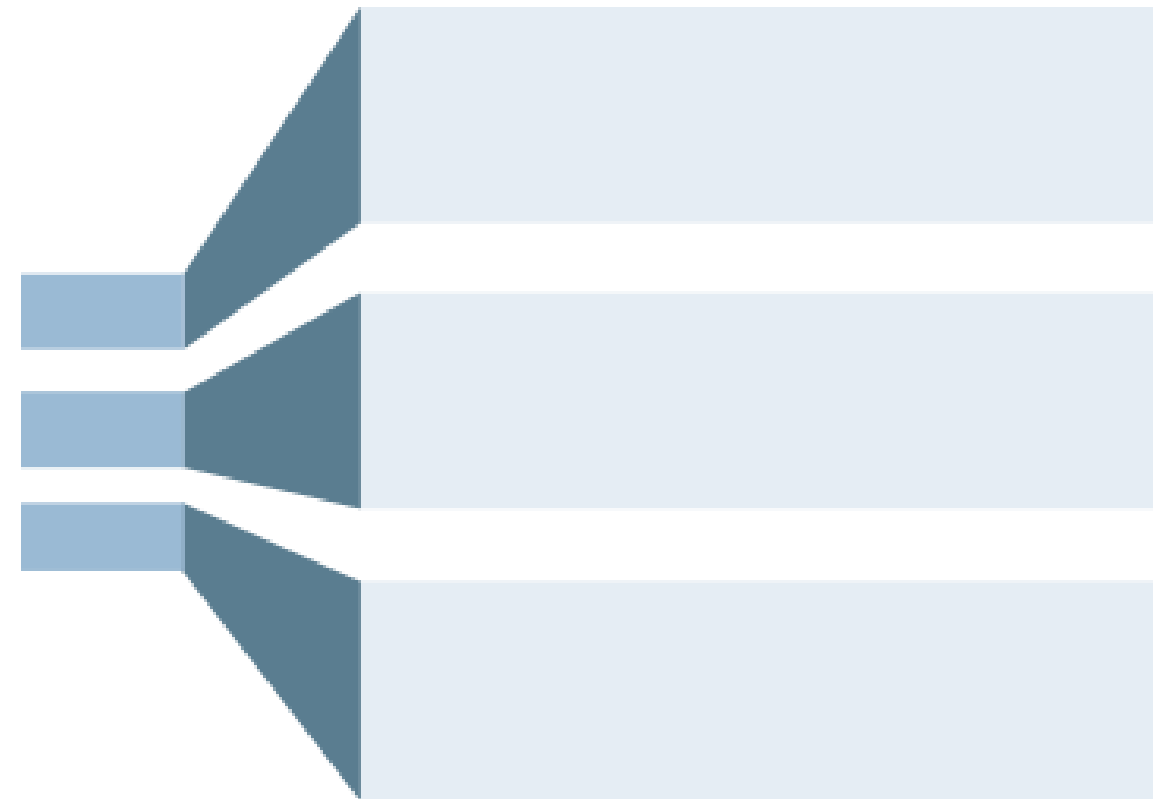


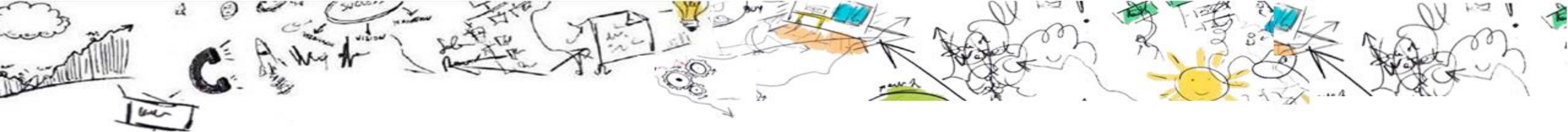
# Workflow Template in SAP





Live





Alle (Un-) Klarheiten beseitigt?



# Markus Sünker

Senior Presales Manager

d.velop AG

**Vielen Dank  
für Ihr Interesse!**

